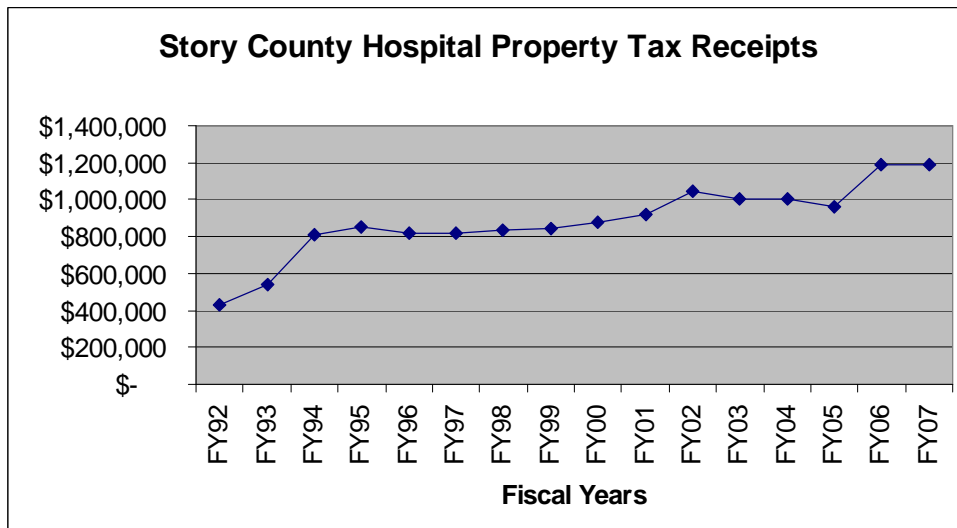


2007 Update of data from:
 League of Women Voters of Ames
 Story County Hospital Study
 —2006 statement—

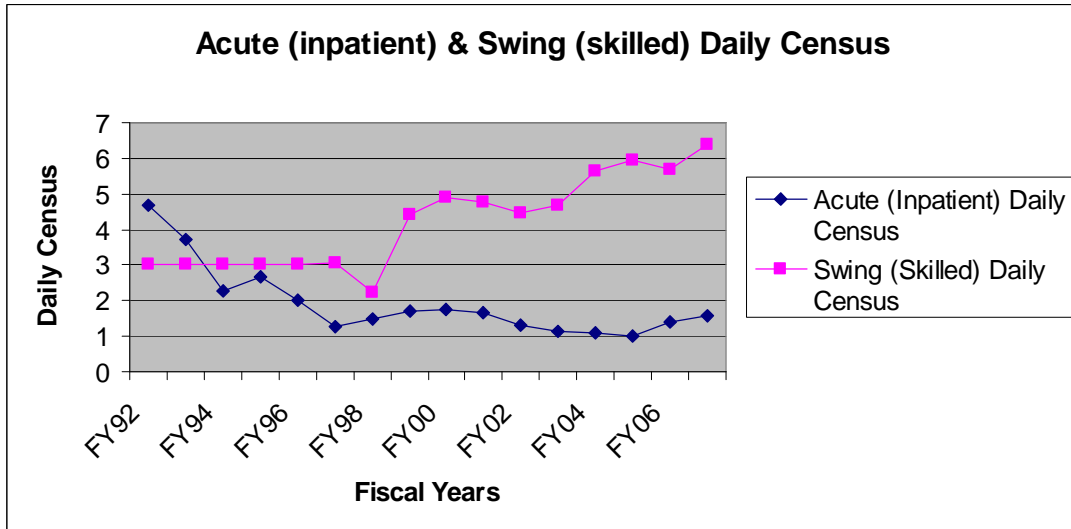
Story County Hospital (SCH) -- Property Tax receipts

Fiscal Year	SCH levy (per \$1,000 assessed property value)	Tax amount received	Source
FY92	0.270	\$ 427,701	LWV Study
FY93	0.357	\$ 539,696	LWV Study
FY94	0.500	\$ 808,867	LWV Study
FY95	0.500	\$ 848,163	LWV Study
FY96	0.470	\$ 822,274	LWV Study
FY97	0.450	\$ 817,839	LWV Study
FY98	0.430	\$ 835,448	Larson Allen Audit
FY99	0.410	\$ 842,613	minutes/Larson Allen Audit
FY00	0.400	\$ 878,615	minutes/Larson Allen Audit
FY01	0.390	\$ 916,778	minutes/Larson Allen Audit
FY02	0.420	\$ 1,045,094	minutes/Larson Allen Audit
FY03	0.380	\$ 1,000,713	minutes/Larson Allen Audit
FY04	0.370	\$ 1,004,052	minutes/Larson Allen Audit
FY05	0.360	\$ 963,409	minutes/Larson Allen Audit
FY06	0.420	\$ 1,187,318	Story Co. Treasurer Office
FY07	0.420	\$ 1,192,899	projected based upon assessment values

The hospital board intended to reduce the tax askings and hoped to ultimately eliminate tax support. However, the consultant for the financing of the new hospital says a reduction is not possible if new hospital building is built. /Martha Grimes Isaacson, LWV Observer from board meetings.



The inpatient census has remained at less than 2 patients per day for more than 10 years.



The long term care unit which for years was at full capacity of 80 beds has declined to less than 75% of capacity during the past two years.

